



Versionskontrolle

Softwareentwicklungspraktikum

PST

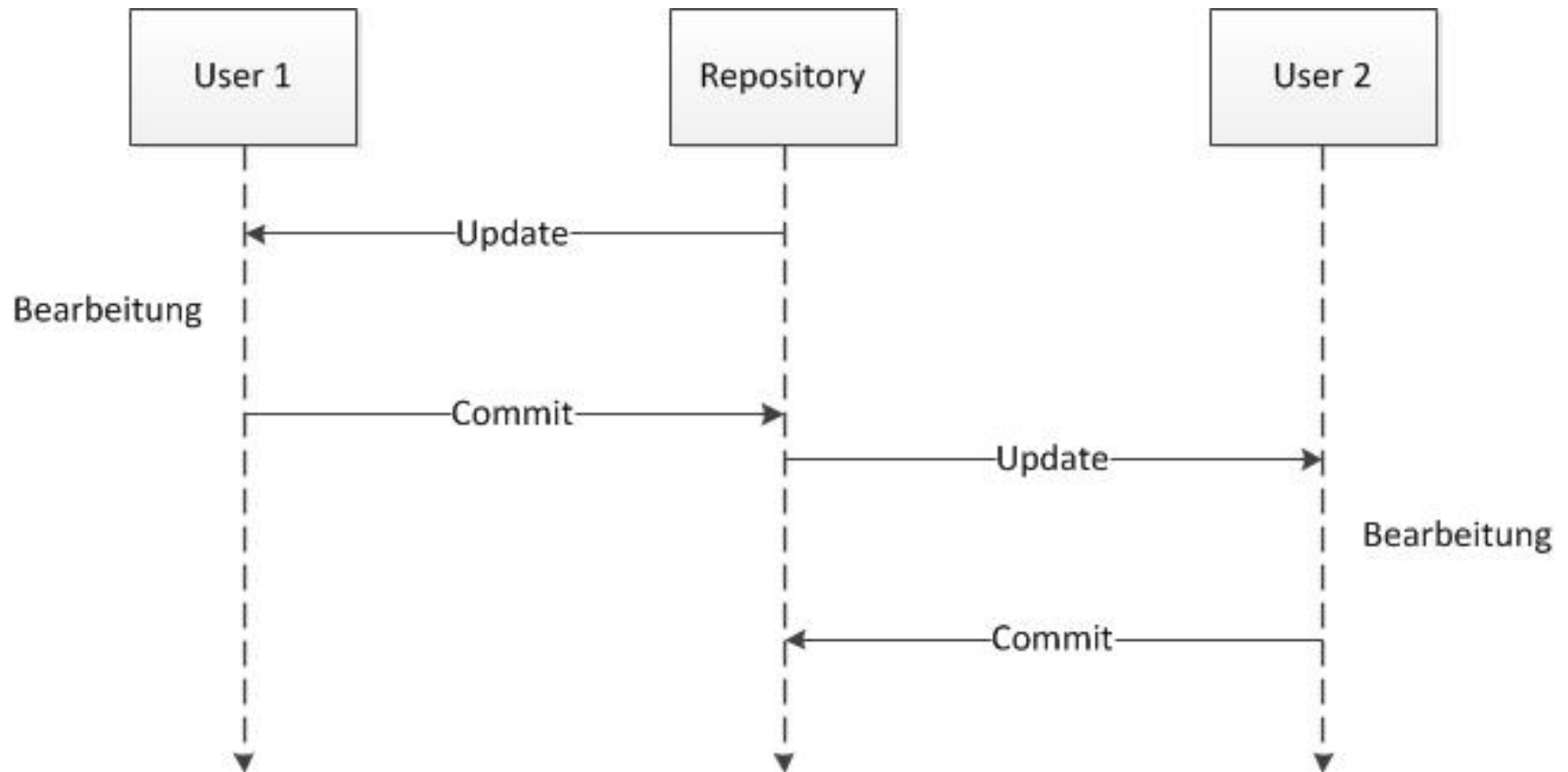


- Protokolliert den Werdegang eines Projektes
- Übernimmt Versionierung und Archivierung von Daten
- Ermöglicht den gemeinsamen Zugriff auf Daten
- Jede Änderung und jeder Stand sind
 - nachvollziehbar
 - rückgängig zu machen
 - wiederherstellbar

- Import
 - Erstmaliges Hochladen eines Projekts
- Checkout
 - Erstmaliges Herunterladen eines versionierten Projekts
- Update
 - Herunterladen von Änderungen
- Commit
 - Hochladen von Änderungen
- Merge
 - Zusammenführen von (evtl. widersprüchlichen) Änderungen

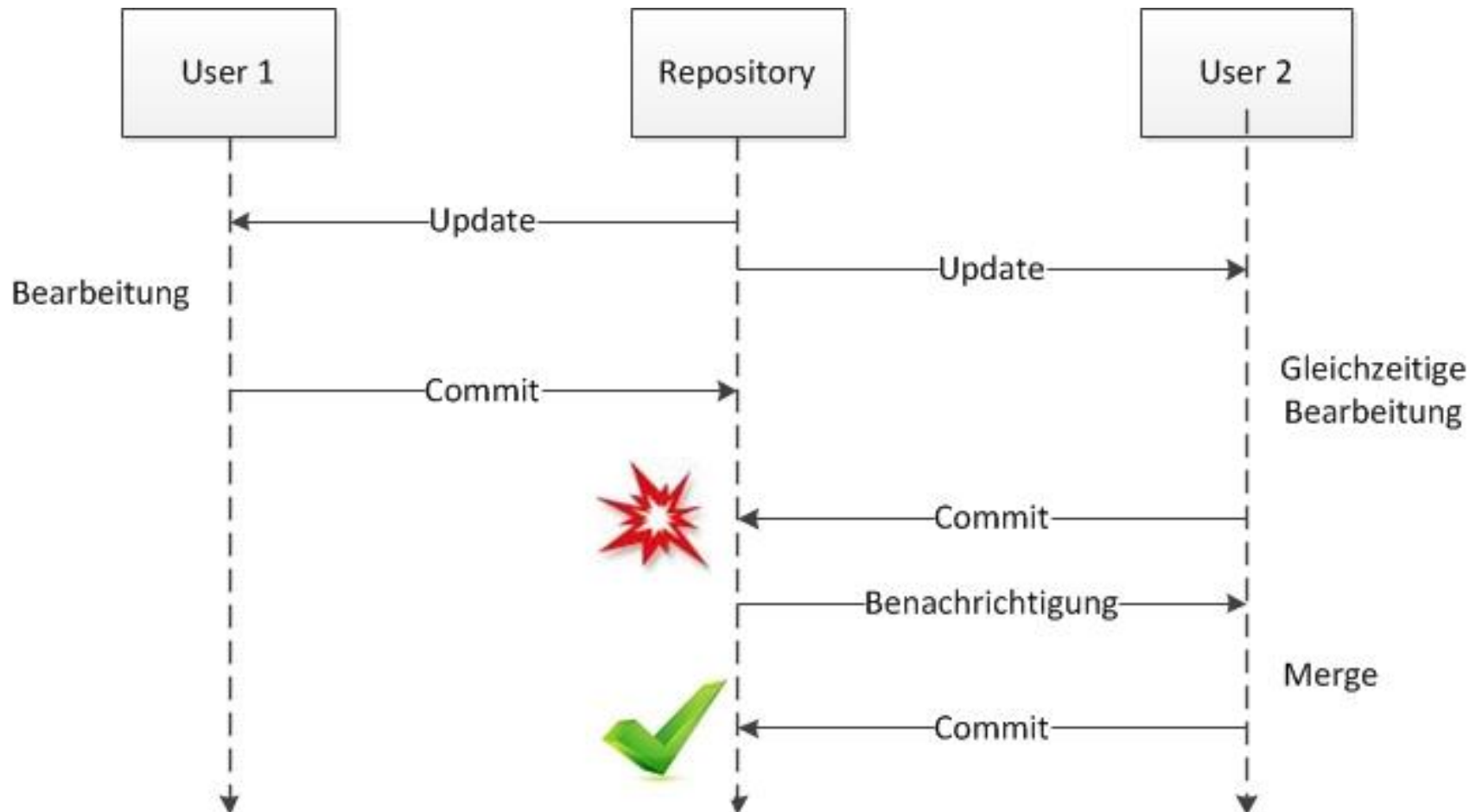


- Normaler Ablauf





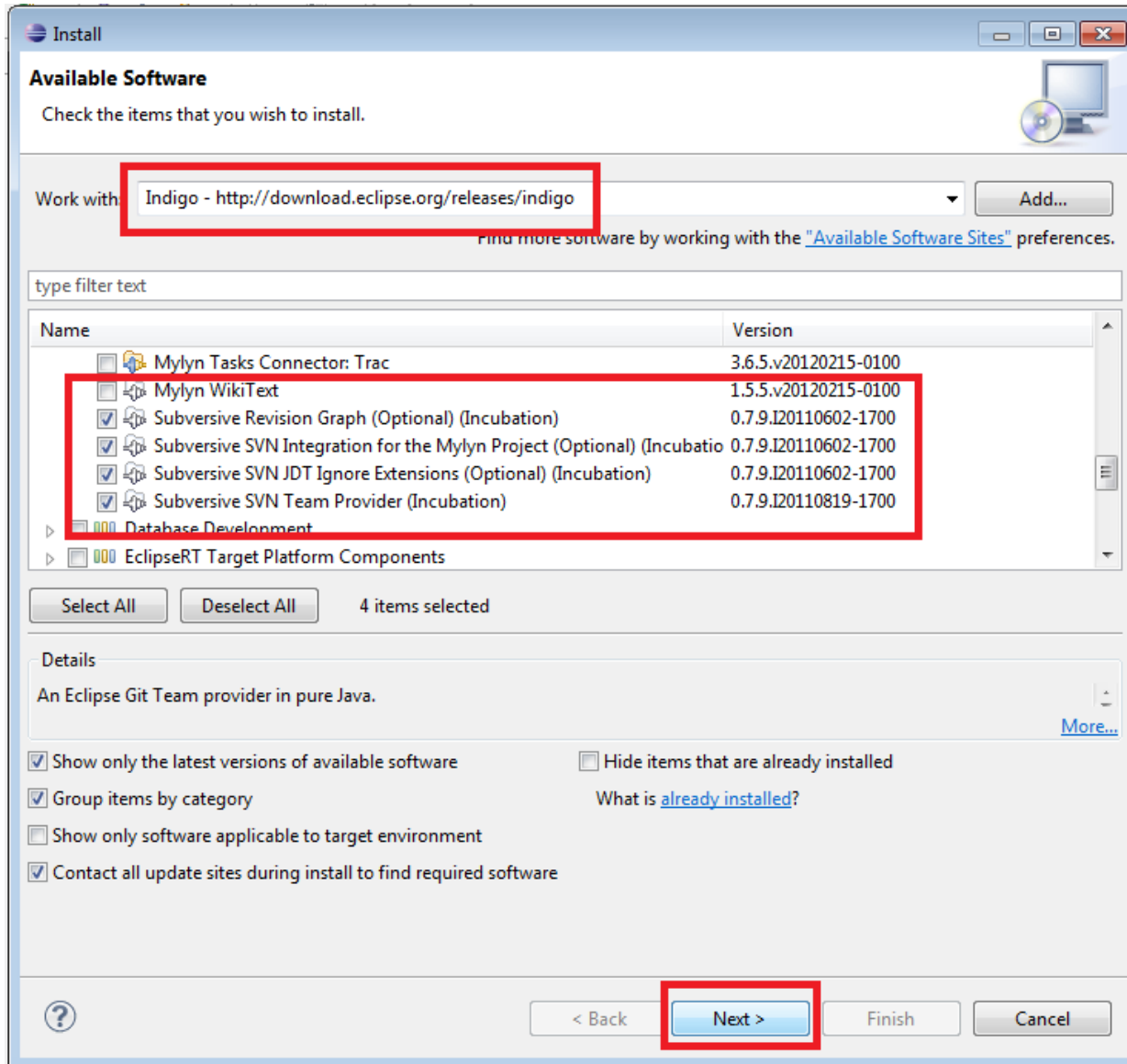
■ Ablauf mit Konflikt



- <http://subversion.apache.org>

- Eclipse-Plugin zur Versionsverwaltung
- Installation über Eclipse-Update-Site
 - Help -> Install New Software
 - Work with:
 - Indigo - <http://download.eclipse.org/releases/indigo>
 - Collaboration
 - > Subversive-Features (1 obligatorisch, 3 optional)

Subversive



Subversive



Install Connectors

Subversive Connector Discovery

Select connectors to install. Press Finish to proceed with installation.
Press the information button to see a detailed overview and a link to more information.

Find:

Subversive SVN Connectors

External SVN connectors for the Eclipse Subversive project. Installation one of the following connectors is required to operate with Subversive. Select connector depending on your SVN environment and operation system.

- SVN Kit 1.2.3** by Polario, TMate Open Source License ⓘ
SVN connector based on SVN Kit library (SVN/1.5.6 SVNKit/1.2.3 r5745). Compatible with SVN 1.5.x. Pure Java. Supported platforms: All.
- SVN Kit 1.3.2** by Polario, TMate Open Source License ⓘ
SVN connector based on SVN Kit library (SVN/1.6.11 SVNKit/1.3.3 r6649). Compatible with SVN 1.6.x. Pure Java. Supported platforms: All.
- SVN Kit 1.3.5** by Polario, TMate Open Source License ⓘ
SVN connector based on SVN Kit library (SVN/1.6.15 SVNKit/1.3.5 r7406). Compatible with SVN 1.6.x. Pure Java. Supported platforms: All.
- Native JavaHL 1.5.4** by Polario, Apache Software License 1.1 ⓘ
SVN connector based on Subversion binaries (Native JavaHL SVN/1.5.4 r33841). Compatible with SVN 1.5.x. Included binaries: for Win32 platform only.
- Native JavaHL 1.6.15** by Polario, Apache Software License 1.1 ⓘ
SVN connector based on Subversion binaries (Native JavaHL SVN/1.6.15 r1038135). Compatible with SVN 1.6.x. Included binaries: for Win32 platform only.

Subversive

